



COMBINATION ANTI-WRINKLE AND DERMAL FILLER

COURSE OVERVIEW

By Ampika's Aesthetics

AM I ELIGIBLE?

- You must be fully confident and have mastered your skills at foundation level in both areas before enrolling on this course. Students that have qualified at Ampika's Aesthetics are able to book onto this course at the discounted rate.
- You will complete this course with full accreditation. There is a 100% pass rate as we will continue to work with you until you can graduate



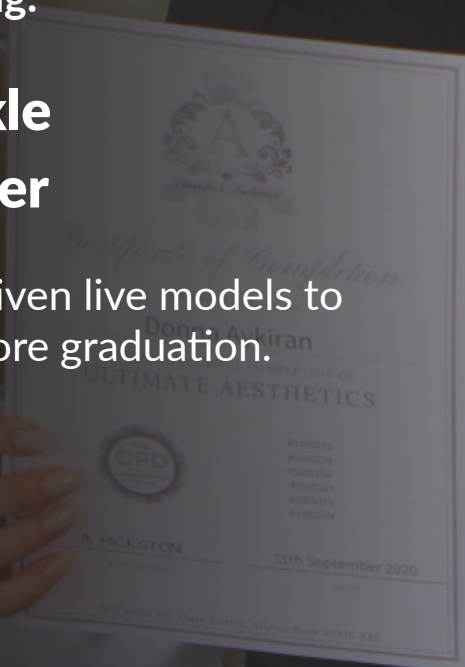


QUALIFICATION AWARDED

Upon completion of the course, you will gain
CPD accreditation in the following:

- ★ **Advanced Anti-Wrinkle**
- ★ **Advanced Dermal Filler**

Along with this, you will also be given live models to
perform your case studies on before graduation.



TIMETABLE

DAY 1

- Introduction meet and greet.
- Theory of Advanced Filler & Advanced Anti Wrinkle Injectables
 - Benefits of Advanced Filler & Advanced Anti Wrinkle Injectables
 - Contraindications
 - Cautions
 - Injection techniques
 - Preparing to inject
 - Lessening and eliminating lines and wrinkles
 - Softening features
 - Facial muscles and arteries
 - Areas (jaw augmentation, non-surgical rhinoplasty, cheek augmentation, chin augmentation, tear trough)
 - Advanced Lip Techniques
 - Marking up
 - Areas and units (Bunny Lines, Jawlines, Gummy Smiles, Downward Smile, Hyperhidrosis, Brow Lift, Neck Lift)
 - Aftercare
 - Demonstration of Advanced Filler & Advanced Anti Wrinkle Injectables on live model
 - Practical case studies on live models





TIMETABLE

DAY 2

- Demonstration of Advanced Filler & Advanced Anti Wrinkle Injectables on live model
- Practical case studies on live models
- Course recap
- Graduation



ARRIVAL

All classes start at 9:30am prompt. You are to arrive at 8:50am ready to start each day.

The courses finish at approximately 5:30pm each day but may vary depending on your course content.

Snacks and drinks will be provided by Ampika's Aesthetics.





LOCATION

- **Address:** 10 Harley Street, London, W1G 9QY



TRANSPORT


- **Tube:** The nearest tube stations are, Bond Street, Oxford Circus & Regents Park.
- **Train:** The nearest train stations to our academy are Euston and Marylebone train stations. Both are around a 25 minute walk or a 10/15 minute taxi (depending on traffic)
- **Taxi:** As we are situated near the airport, there is always a high number of taxi services available in the area at short notice. Uber's also available.
- **Parking:** There are two main car parks situated close to Harley Street:
 - NCP London Harley Street*
 - Q-Park Oxford Street*

Please check availability in advance



ACCOMMODATION

- **The Langham, London:**
1C Portland Pl, London W1B 1JA
- **The Marylebone Hotel:**
47 Welbeck St, London W1G 8DN
- **Treehouse Hotel London:**
14-15 Langham Pl, London W1B 2QS
- **Holiday Inn London:**
Oxford Circus: 57-59 Welbeck St, London W1G 9BL
- **Radisson Blu Edwardian, Berkshire:**
350 Oxford St, London W1C 1BY



206



DRESS CODE

Appropriate attire is needed throughout the duration of the course as this is a clinical environment.

You will be expected to:

- Wear flat, sensible, closed-toe shoes
- Wear tunic or salon wear
- Wear leggings/pants
- Have your hair tied back
- Provide your own protective face mask or visor

Failure to do so will put the clients and yourself at risk.





**If you have any further questions, please contact
us via email at ampikasaesthetics@gmail.com
or call us on 0333 996 2690**

Ampika Pickston