

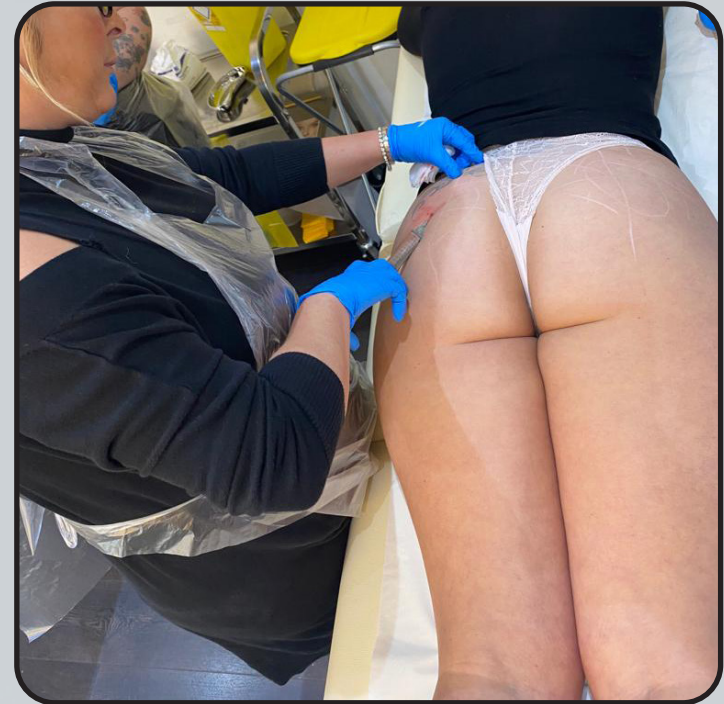


BUTTOCK INJECTIONS COURSE OVERVIEW

By Ampika's Aesthetics

AM I ELIGIBLE?

- This course is designed for medics and non-medics who are injectable trained and have been practicing for at least 6 months.
- If you're not injectable trained, you can attend our beginners course, Ultimate Aesthetics, to gain injectable qualification before attending this course.
- You will complete this course with full accreditation. There is a 100% pass rate as we will continue to work with you until you can graduate.



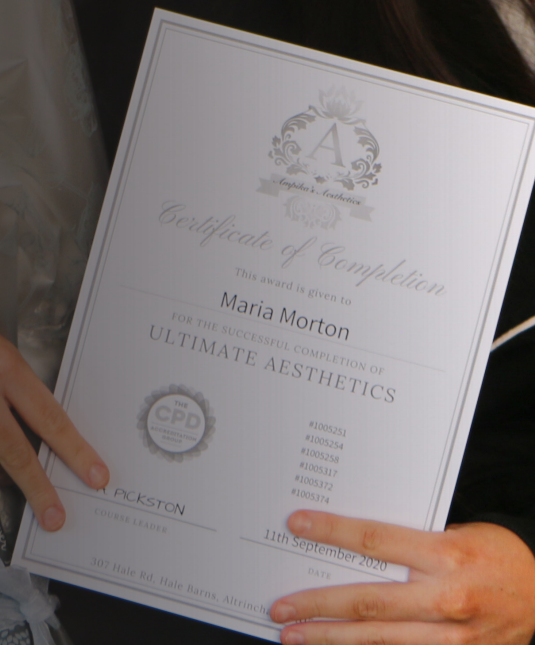


QUALIFICATION AWARDED

Upon completion of the course, you will gain CPD accreditation in the following:

Buttock Injections

Along with this, you will also be taught a full clinical set up and client consultation to help kick start your clinic.





TIMETABLE

DAY 1

- Introduction meet and greet
- Cover theory of the anatomy of the buttock area
 - Mapping and products history and procedures
 - Indications to treat a client
 - Contraindications
 - Consultation process
 - Techniques of application
 - After care
 - Client selection
 - Benefits
 - Clinical set up and treatment costs
- Carry out live procedures on selected models
- Course recap
- Graduation



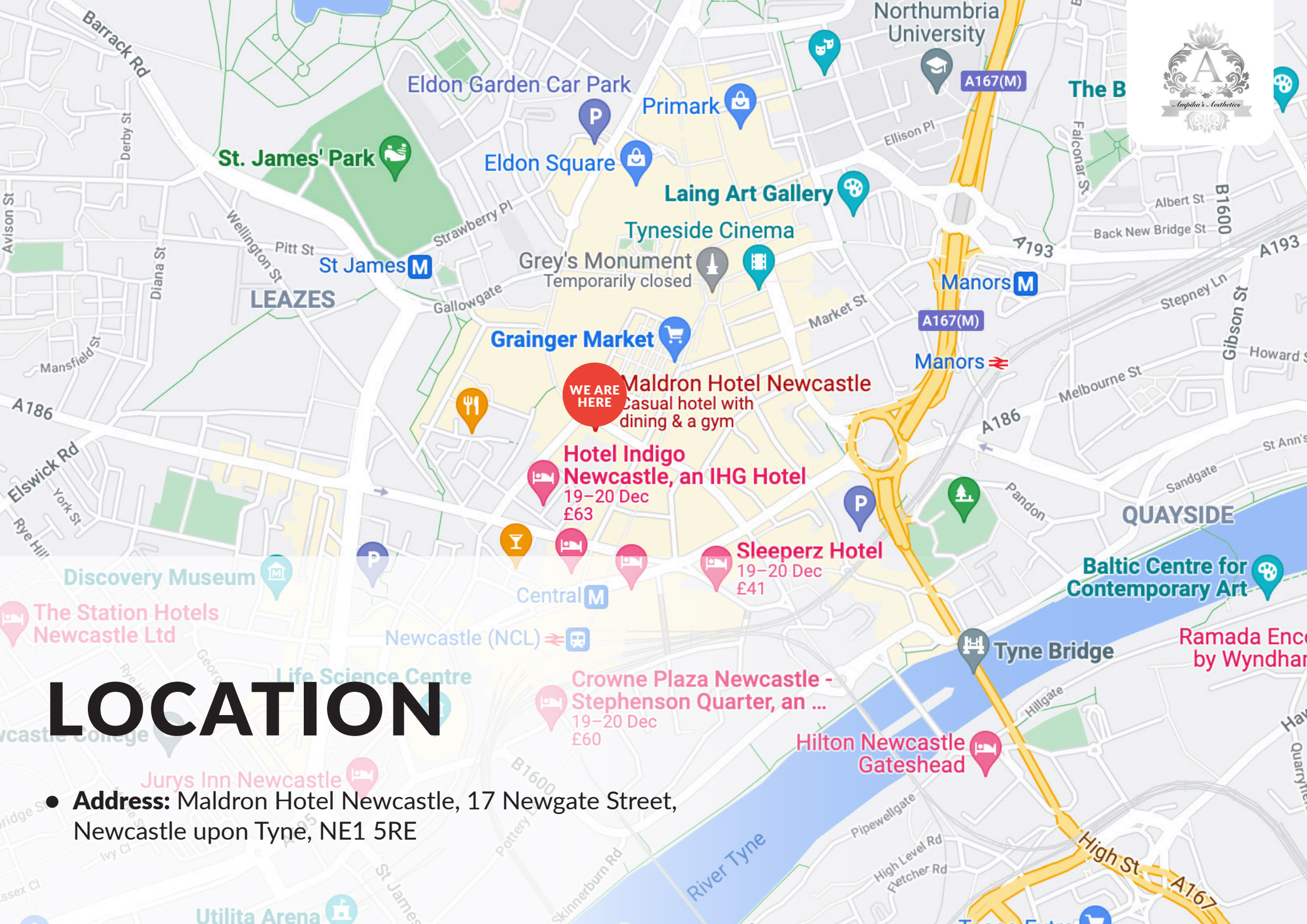


ARRIVAL

All classes start at 9am prompt. You are to arrive at 8:50am ready to start each day.

The courses finish at approximately 5:30pm each day but may vary depending on your course content.





LOCATION

- **Address:** Maldron Hotel Newcastle, 17 Newgate Street, Newcastle upon Tyne, NE1 5RE

TRANSPORT



- **Travelling by Metro**

Maldron Hotel Newcastle is situated close to both Central and Monument Metro stations.

From Monument it is only a 3 minute walk; exit the station onto Grainger Street and turn right onto Newgate Street and our hotel is directly on your left. Alternatively, Central is a 5 minute walk; walk up Grainger Street, turn left onto Newgate Street and our hotel is on your left.

Fares start from as little as £2. The metro connects both Central and Monument stations to the airport within 20 minutes.

- **Travelling by Bus**

Haymarket Bus station is a 5-minute walk; head along Percy Street to Newgate Street and our city centre hotel is on your right. Two bus operators work from Haymarket Bus station, serving local routes as well as surrounding areas on the Northumberland coastline.

- **Travelling by Air**

Newcastle Airport is only 7 miles away from our hotel. The Metro connects the airport to the city centre within 20 minutes, depart the Metro at either Central or Monument and from here it is a 5-minute walk; exit the station onto Grainger Street and turn right onto Newgate Street, the hotel is directly on your left.

Alternatively, taxis are available which will cost roughly £20 and take approximately 10 minutes. Our reception team would be more than happy to arrange a taxi if you require one.





ACCOMMODATION

- **Jurys Inn Newcastle**
Scotswood Road, Newcastle upon Tyne, NE1 4AD
- **Royal Station Hotel**
Neville Street, Newcastle upon Tyne, NE1 5DH
- **Sleeperz Hotel Newcastle**
15 Westgate Road, Newcastle upon Tyne, NE1 1SE
- **Jurys Inn Newcastle Quayside**
South Shore Road, Gateshead Quays, Newcastle upon Tyne, NE8 3AE
- **Crowne Plaza Newcastle**
Stephenson Quarter, Forth Street, Newcastle upon Tyne, NE1 3SA

206



DRESS CODE


Appropriate attire is needed throughout the duration of the course as this is a clinical environment.

You will be expected to:

- Wear flat, sensible, closed-toe shoes
- Wear tunic or salon wear
- Wear leggings/pants
- Have your hair tied back
- Provide your own protective face mask or visor

Failure to do so will put the clients and yourself at risk.





If you have any further questions, please contact
us via email at ampikasaesthetics@gmail.com
or call us on 0333 996 2690

Ampika Pickston