



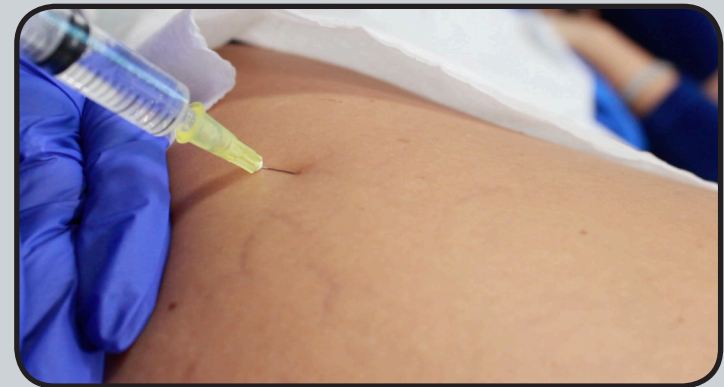
SCLEROTHERAPY VEIN REMOVAL COURSE OVERVIEW

By Ampika's Aesthetics



AM I ELIGIBLE?

- This course is designed for medics and non-medics who are injectable trained and have been practicing for at least 6 months.
- If you're not injectable trained, you can attend our beginners course, Ultimate Aesthetics, to gain injectable qualification before attending this course.
- You will complete this course with full accreditation. There is a 100% pass rate as we will continue to work with you until you can graduate.





QUALIFICATION AWARDED

Upon completion of the course, you will gain CPD accreditation in the following:

 **Sclectherapy**

Along with this, you will also be taught a full clinical set up and client consultation to help kick start your clinic.





TIMETABLE

DAY 1

- Introduction meet and greet
- Sclerotherapy Theory:
 - Benefits of Sclerotherapy
 - Structure of the Skin
 - Understanding spider and reticular veins
 - Fibro vein
 - Consultation process
 - Contraindications
 - Cautions
 - Injection techniques
 - Preparing to inject
 - Application
 - Aftercare
- Demonstration on live model
- Perform case study on live model
- Recap of course
- Graduation





ARRIVAL

All classes start at 9:00am prompt. You are to arrive at 8:50am ready to start each day.

The courses finish at approximately 5:30pm each day but may vary depending on your course content.





LOCATION

- **Address:** 10 Harley Street, London, W1G 9QY



TRANSPORT


- **Tube:** The nearest tube stations are, Bond Street, Oxford Circus & Regents Park.
- **Train:** The nearest train stations to our academy are Euston and Marylebone train stations. Both are around a 25 minute walk or a 10/15 minute taxi (depending on traffic)
- **Taxi:** As we are situated near the airport, there is always a high number of taxi services available in the area at short notice. Uber's also available.
- **Parking:** There are two main car parks situated close to Harley Street:
 - NCP London Harley Street*
 - Q-Park Oxford Street*Please check availability in advance





ACCOMMODATION

- **The Langham, London:**
1C Portland Pl, London W1B 1JA
- **The Marylebone Hotel:**
47 Welbeck St, London W1G 8DN
- **Treehouse Hotel London:**
14-15 Langham Pl, London W1B 2QS
- **Holiday Inn London:**
Oxford Circus: 57-59 Welbeck St, London W1G 9BL
- **Radisson Blu Edwardian, Berkshire:**
350 Oxford St, London W1C 1BY



206



DRESS CODE

Appropriate attire is needed throughout the duration of the course as this is a clinical environment.

You will be expected to:

- Wear flat, sensible, closed-toe shoes
- Wear tunic or salon wear
- Wear leggings/pants
- Have your hair tied back
- Provide your own protective face mask or visor

Failure to do so will put the clients and yourself at risk.





If you have any further questions, please contact
us via email at ampikasaesthetics@gmail.com
or call us on 0333 996 2690

Ampika Pickston