

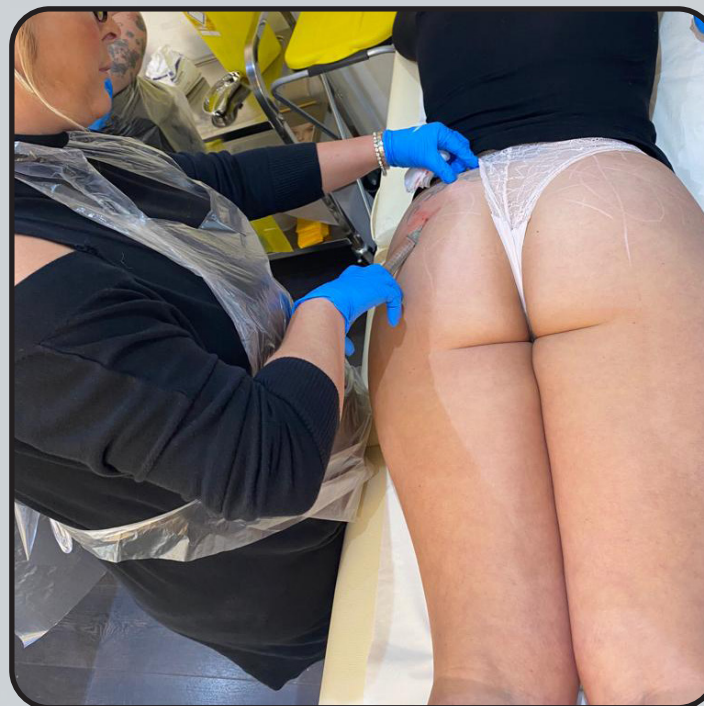


BUTTOCK INJECTIONS COURSE OVERVIEW

By Ampika's Aesthetics

AM I ELIGIBLE?

- This course is designed for medics and non-medics who are injectable trained and have been practicing for at least 6 months.
- If you're not injectable trained, you can attend our beginners course, Ultimate Aesthetics, to gain injectable qualification before attending this course.
- You will complete this course with full accreditation. There is a 100% pass rate as we will continue to work with you until you can graduate.





QUALIFICATION AWARDED

Upon completion of the course, you will gain
CPD accreditation in the following:

Buttock Injections

Along with this, you will also be taught a full clinical set
up and client consultation to help kick start your clinic.



TIMETABLE

DAY 1

- Introduction meet and greet
- Cover theory of the anatomy of the buttock area
 - Mapping and products history and procedures
 - Indications to treat a client
 - Contraindications
 - Consultation process
 - Techniques of application
 - After care
 - Client selection
 - Benefits
 - Clinical set up and treatment costs
- Carry out live procedures on selected models
- Course recap
- Graduation





ARRIVAL

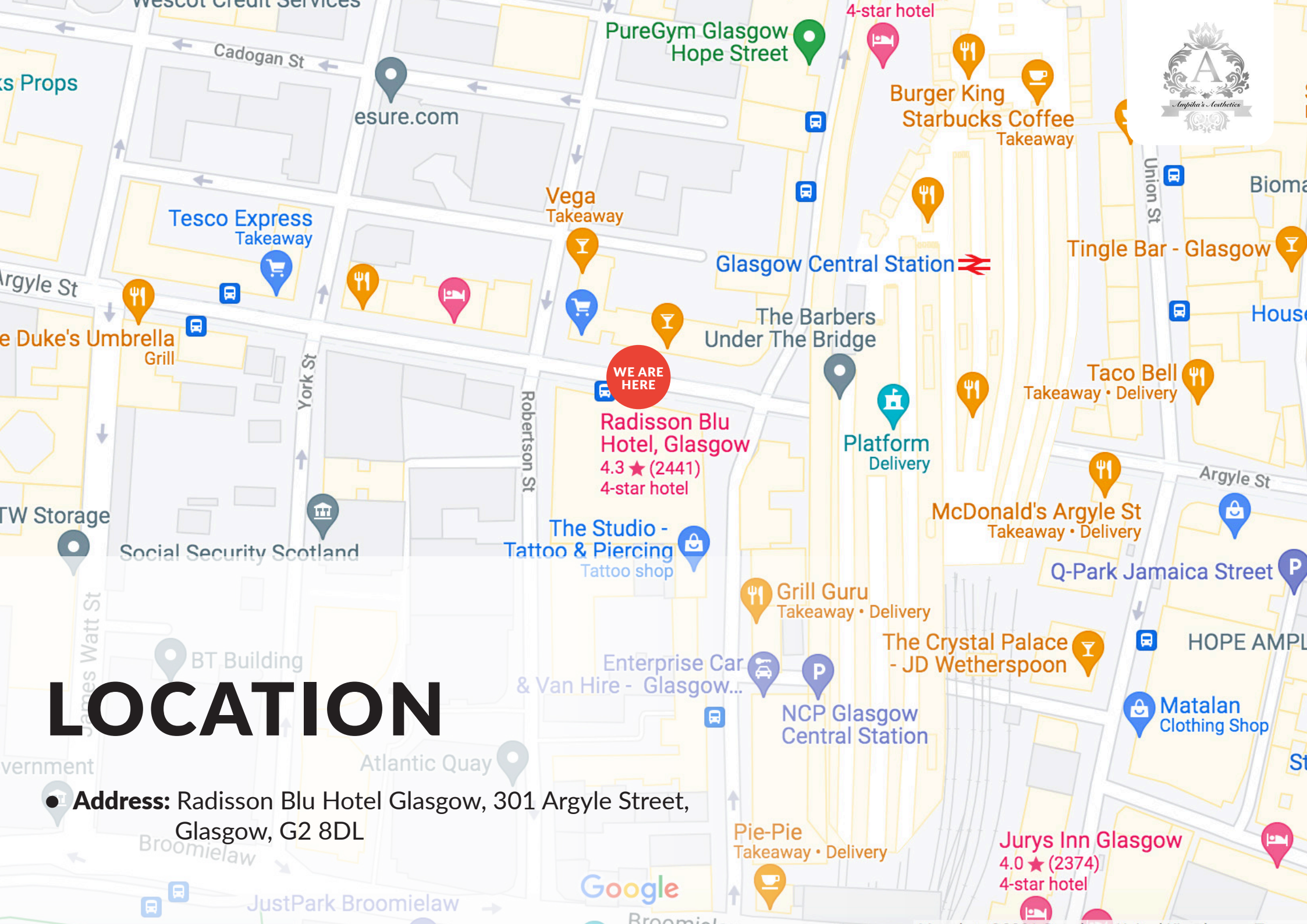
All classes start at 9:00am prompt. You are to arrive at 8:50am ready to start each day.

The courses finish at approximately 5:30pm each day but may vary depending on your course content.



LOCATION

● **Address:** Radisson Blu Hotel Glasgow, 301 Argyle Street,
Glasgow, G2 8DL



TRANSPORT

- **From Glasgow Airport**

By bus: Take the Airport Express to the Waterloo Lane stop. You'll be just 350 meters from the hotel.

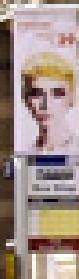
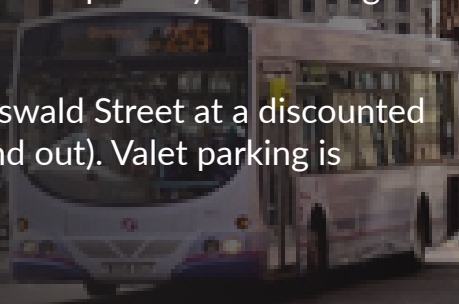
By taxi: Travel to the hotel by taxi takes about 20 minutes. The airport is about 14km from the hotel via M8.

By car: Exit the M8 at Junction 18: City Centre. Continue along Bothwell Street at the traffic lights. At the next set of lights turn right onto Wellington Street. Continue down Wellington Street straight through the next two sets of lights onto Robertson Street (the side of the hotel). Arriving at the next set of lights, turn left onto Broomielaw and then left again at the next lights onto Oswald Street. You will see the hotel on your left. Turn left at the lights onto Argyle Street to arrive at the front of the hotel.

- **From Glasgow Central Station**

On foot: The hotel is located on Argyle St just a few steps away from Glasgow Central station.

- **Parking:** Car parking is available nearby at NCP Oswald Street at a discounted rate from hotel reception (includes 1 journey in and out). Valet parking is available for an additional fee.



ACCOMMODATION



- **Radisson Blu Hotel**
301 Argyle Street, Glasgow, G2 8DL
Ampika's Aesthetics training Location
- **Yotel Glasgow**
Westergate, 260 Argyle Street, Glasgow, G2 8QW
Travel time: 1 minute walk to Ampika's Aesthetics
- **Motel One Glasgow**
78-82 Oswald Street, Glasgow, G1 4PL
Travel time: 1 minute walk to Ampika's Aesthetics
- **Jurys In Glasgow**
80 Jamaica Street, Glasgow, G1 4QG
Travel time: 3 minute walk to Ampika's Aesthetics
- **Grasshoppers Hotel**
87 Union Street, Glasgow G1 3TA
Travel time: 5 minute walk to Ampika's Aesthetics
- **Alexander Hotel**
320 Argyle Street, Glasgow, G2 8LY
Travel time: 1 minute walk to Ampika's Aesthetics





DRESS CODE


Appropriate attire is needed throughout the duration of the course as this is a clinical environment.

You will be expected to:

- Wear flat, sensible, closed-toe shoes
- Wear tunic or salon wear
- Wear leggings/pants
- Have your hair tied back
- Provide your own protective face mask or visor

Failure to do so will put the clients and yourself at risk.





If you have any further questions, please contact
us via email at ampikasaesthetics@gmail.com
or call us on 0333 996 2690

Ampika Pickston