



CHEMICAL PEEL COURSE OVERVIEW

By Ampika's Aesthetics

AM I ELIGIBLE?

- Students must have qualified in Anatomy and Physiology level 3 & 4 to attend this course.
- If you are a medic with proof of certification or if you have a Beauty Level 3 NVQ or above then please feel free to attend this course.
- Upon completing this course you will be fully accredited through CPD to carry out these treatments once you gain insurance with InSync.





QUALIFICATION AWARDED

Upon completion of the course, you will gain CPD accreditation in the following:

Chemical Peel

Along with this, you will also be taught a full clinical set up and client consultation to help kick start your clinic.





TIMETABLE

DAY 1

The one day course is split between practical and theory-based modules including:

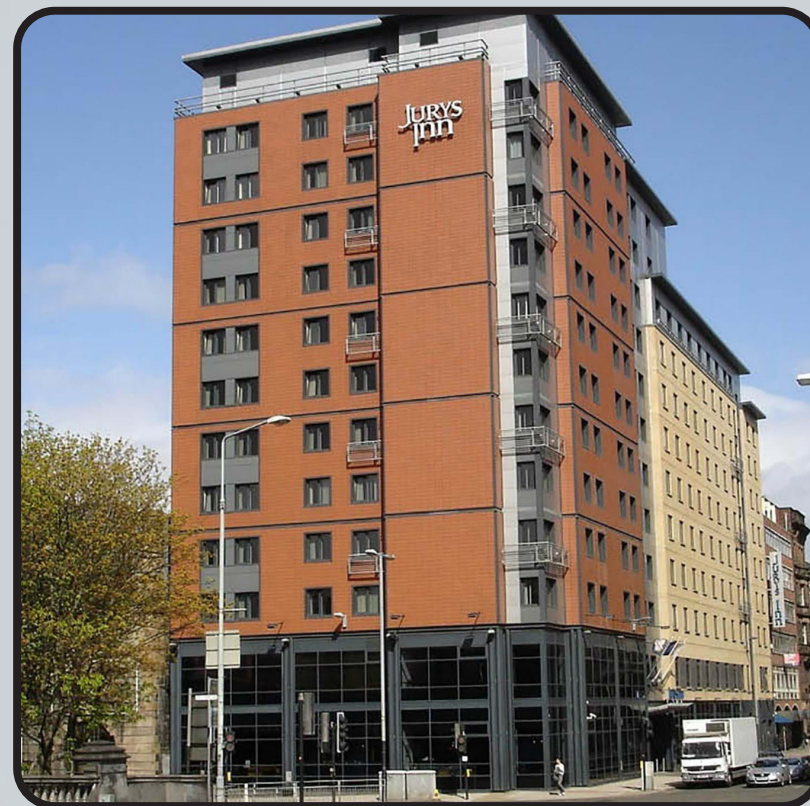
- Anatomy & Physiology recap
- Product discussion
- Client suitability assessment and consultation
- Injection techniques
- Aftercare
- Side effects and complications
- Practice on a live model

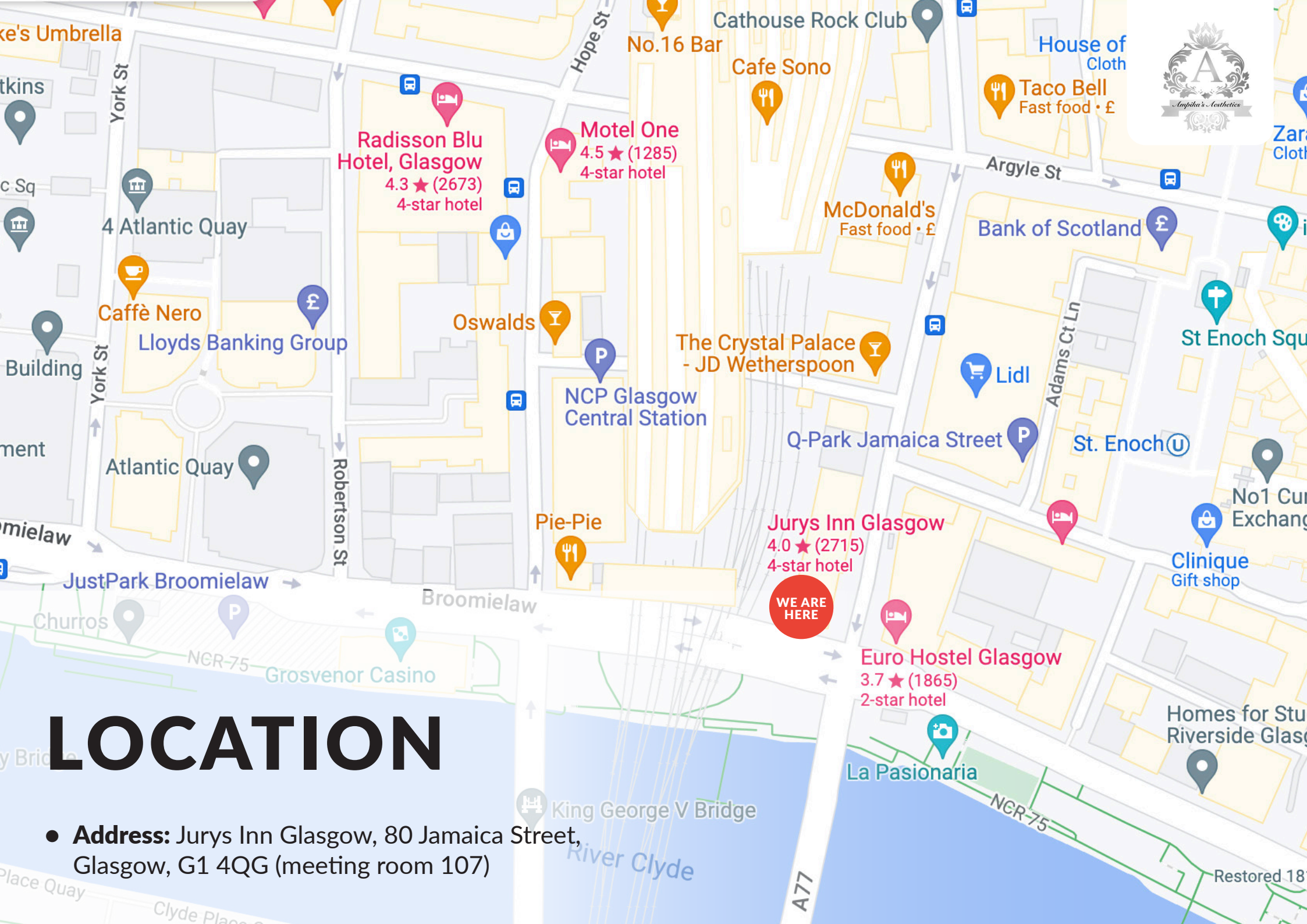


ARRIVAL

All classes start at 9:00am prompt. You are to arrive at 8:50am ready to start each day.

The courses finish at approximately 5:30pm each day but may vary depending on your course content.





LOCATION

- **Address:** Jurys Inn Glasgow, 80 Jamaica Street, Glasgow, G1 4QG (meeting room 107)

TRANSPORT

- **From Glasgow Airport**

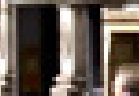
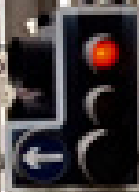
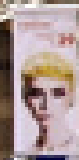
By public transport: There is a bus available at the airport which will take you to Central Station. The bus is available every 15 mins and will take approx 20-30 mins depending on traffic. Once at Central Station please see directions above.

By car: If you are driving from the airport please take the signs for the M8 City Centre. Once on the M8 exit at junction 19. Turn left onto Argyle Street. Turn right at James Watt Street, turn left onto the Broomielaw (Clyde Street). Continue on this street, turn left at Oswald Street, take your first right onto Midland Street. At the end of this street take a right turn and Jurys Inn Glasgow is on your right hand side.

- **From Glasgow Central Station**

2 minute walk. Exit Glasgow Central from Union Street exit. Turn right and keep walking down past MacDonalds. Jurys Inn is situated at the end of this street.

- **Parking:** Parking is available within a 3 min walk from the hotel at Qpark Jamaica Street - with charges from £8 for 24 hours. To secure this rate make sure to get your ticket validated at the hotel reception and pay for your parking at the QPark Car Park Office.





ACCOMMODATION

- **Jurys In Glasgow**
80 Jamaica Street, Glasgow, G1 4QG
Ampika's Aesthetics training Location
- **Yotel Glasgow**
Westergate, 260 Argyle Street, Glasgow, G2 8QW
Travel time: 1 minute walk to Ampika's Aesthetics
- **Motel One Glasgow**
78-82 Oswald Street, Glasgow, G1 4PL
Travel time: 1 minute walk to Ampika's Aesthetics
- **Radisson Blu Hotel**
301 Argyle Street, Glasgow, G2 8DL
Travel time: 3 minute walk to Ampika's Aesthetics
- **Grasshoppers Hotel**
87 Union Street, Glasgow G1 3TA
Travel time: 5 minute walk to Ampika's Aesthetics
- **Alexander Hotel**
320 Argyle Street, Glasgow, G2 8LY
Travel time: 1 minute walk to Ampika's Aesthetics





DRESS CODE

Appropriate attire is needed throughout the duration of the course as this is a clinical environment.

You will be expected to:

- Wear flat, sensible, closed-toe shoes
- Wear tunic or salon wear
- Wear leggings/pants
- Have your hair tied back
- Provide your own protective face mask or visor

Failure to do so will put the clients and yourself at risk.





If you have any further questions, please contact
us via email at ampikasaesthetics@gmail.com
or call us on 0333 996 2690

Ampika Pickston