

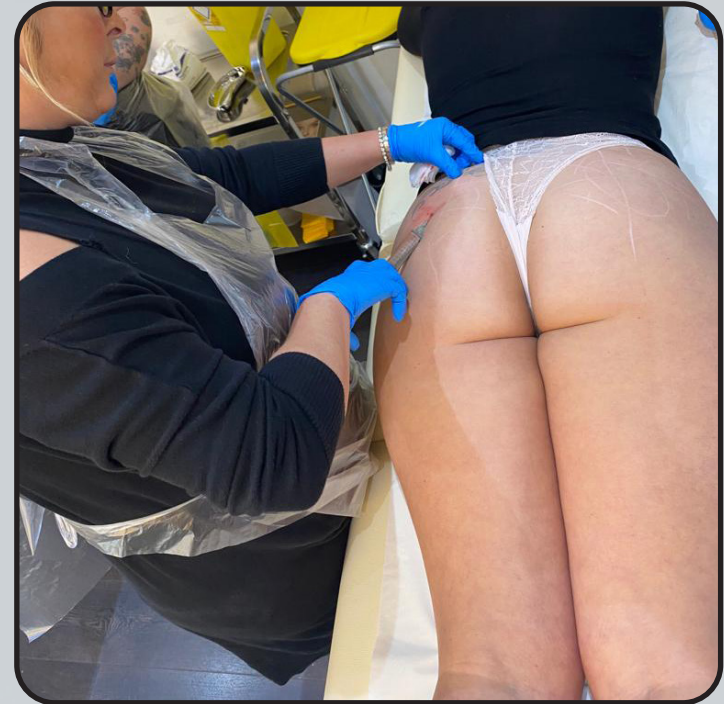


# BUTTOCK INJECTIONS COURSE OVERVIEW

*By Ampika's Aesthetics*

# AM I ELIGIBLE?

- This course is designed for medics and non-medics who are injectable trained and have been practicing for at least 6 months.
- If you're not injectable trained, you can attend our beginners course, Ultimate Aesthetics, to gain injectable qualification before attending this course.
- You will complete this course with full accreditation. There is a 100% pass rate as we will continue to work with you until you can graduate.



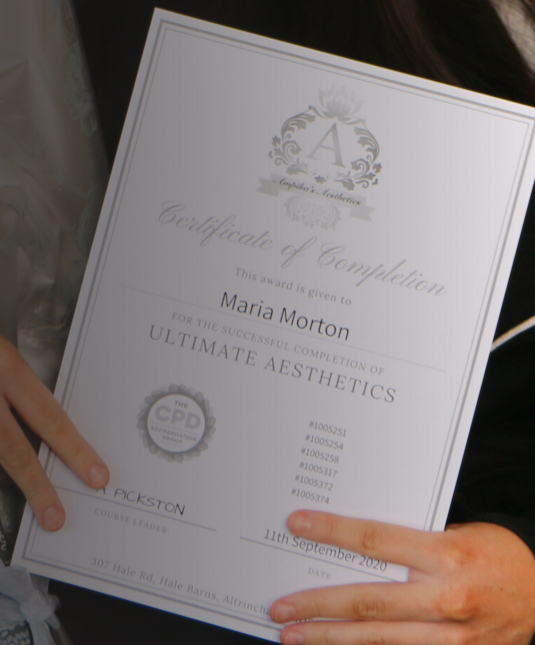


# QUALIFICATION AWARDED

Upon completion of the course, you will gain CPD accreditation in the following:

## Buttock Injections

Along with this, you will also be taught a full clinical set up and client consultation to help kick start your clinic.





# TIMETABLE

## DAY 1

- Introduction meet and greet
- Cover theory of the anatomy of the buttock area
  - Mapping and products history and procedures
  - Indications to treat a client
  - Contraindications
  - Consultation process
  - Techniques of application
  - After care
  - Client selection
  - Benefits
  - Clinical set up and treatment costs
- Carry out live procedures on selected models
- Course recap
- Graduation





# ARRIVAL

All classes start at 9am prompt. You are to arrive at 8:50am ready to start each day.

The courses finish at approximately 5:30pm each day but may vary depending on your course content.

**PLEASE NOTE THE TIMINGS OF THE COURSE WILL CHANGE TO THE FOLLOWING FROM OCTOBER 1ST 2023:**

The course will start at 11am and end at 7.30pm. There are two breaks throughout the day. The first break is 3pm - 3.30pm and the second break is at 5pm - 5.30pm.

Please bring your own food and refreshments as we are limited on time as we are providing a large amount of models for you to learn and train upon.

Please arrive 10 minutes early.





# LOCATION

- **Address:** 10 Harley Street, London, W1G 9QY



# TRANSPORT

- **Tube:** The nearest tube stations are, Bond Street, Oxford Circus & Regents Park.
- **Train:** The nearest train stations to our academy are Euston and Marylebone train stations. Both are around a 25 minute walk or a 10/15 minute taxi (depending on traffic)
- **Taxi:** As we are situated near the airport, there is always a high number of taxi services available in the area at short notice. Uber's also available.
- **Parking:** There are two main car parks situated close to Harley Street:
  - NCP London Harley Street\*
  - Q-Park Oxford Street\*Please check availability in advance





# ACCOMMODATION

- **Hub by Premier Inn**

Brook House, Torrington Place, London, WC1E 7HN

*Travel time: 15 minute walk to Ampika's Aesthetics*

- **Hub by Premier Inn Covent Garden**

110 St Martins Lane, London, WC2N 4BA

*Travel time: 15 minute walk to Ampika's Aesthetics*

- **Holiday inn Regents Park**

Carburton Street, London, W1W 5EE

*Travel time: 10 minute walk to Ampika's Aesthetics*

206





# DRESS CODE


Appropriate attire is needed throughout the duration of the course as this is a clinical environment.

## **You will be expected to:**

- Wear flat, sensible, closed-toe shoes
- Wear tunic or salon wear
- Wear leggings/pants
- Have your hair tied back
- Provide your own protective face mask or visor

Failure to do so will put the clients and yourself at risk.





If you have any further questions, please contact  
us via email at [ampikasaesthetics@gmail.com](mailto:ampikasaesthetics@gmail.com)  
or call us on 0333 996 2690

*Ampika Pickston*