

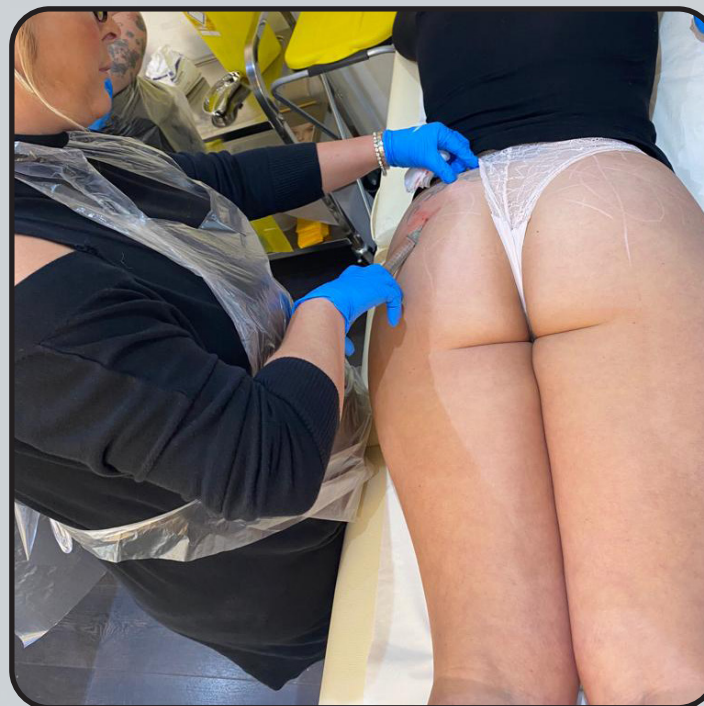


# BUTTOCK INJECTIONS COURSE OVERVIEW

*By Ampika's Aesthetics*

# AM I ELIGIBLE?

- This course is designed for medics and non-medics who are injectable trained and have been practicing for at least 6 months.
- If you're not injectable trained, you can attend our beginners course, Ultimate Aesthetics, to gain injectable qualification before attending this course.
- You will complete this course with full accreditation. There is a 100% pass rate as we will continue to work with you until you can graduate.





# QUALIFICATION AWARDED

Upon completion of the course, you will gain  
CPD accreditation in the following:

## **Buttock Injections**

Along with this, you will also be taught a full clinical set  
up and client consultation to help kick start your clinic.



# TIMETABLE

## DAY 1

- Introduction meet and greet
- Cover theory of the anatomy of the buttock area
  - Mapping and products history and procedures
  - Indications to treat a client
  - Contraindications
  - Consultation process
  - Techniques of application
  - After care
  - Client selection
  - Benefits
  - Clinical set up and treatment costs
- Carry out live procedures on selected models
- Course recap
- Graduation



# ARRIVAL

All classes start at 9am prompt. You are to arrive at 8:50am ready to start each day.

The courses finish at approximately 5:30pm each day but may vary depending on your course content.

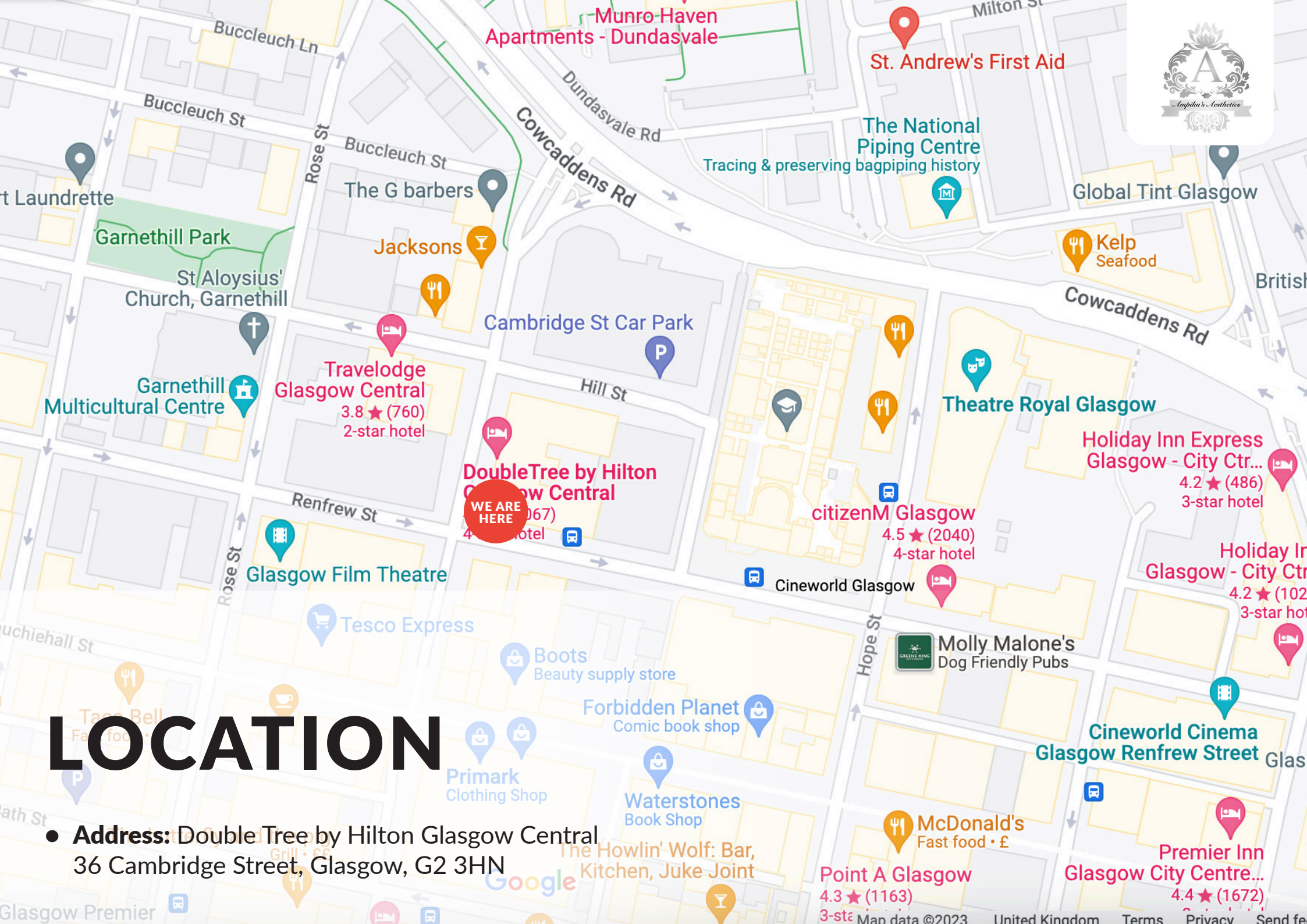
**PLEASE NOTE THE TIMINGS OF THE COURSE WILL CHANGE TO THE FOLLOWING FROM OCTOBER 1ST 2023:**

The course will start at 11am and end at 7.30pm. There are two breaks throughout the day. The first break is 3pm - 3.30pm and the second break is at 5pm - 5.30pm.

Please bring your own food and refreshments as we are limited on time as we are providing a large amount of models for you to learn and train upon.

Please arrive 10 minutes early.





# LOCATION

- **Address:** Double Tree by Hilton Glasgow Central  
36 Cambridge Street, Glasgow, G2 3HN

Point A Glasgow  
4.3 ★ (1163)  
3-star hotel

Premier Inn  
Glasgow City Centre...  
4.4 ★ (1672)  
3-star hotel

Holiday Inn Express  
Glasgow - City Ctr...  
4.2 ★ (486)  
3-star hotel

Holiday Inn  
Glasgow - City Ctr...  
4.2 ★ (102)  
3-star hotel

Cineworld Cinema  
Glasgow Renfrew Street  
Glasgow

Molly Malone's  
Dog Friendly Pubs

Cineworld Glasgow

citizenM Glasgow  
4.5 ★ (2040)  
4-star hotel

Theatre Royal Glasgow

DoubleTree by Hilton  
Glasgow Central  
4.0 ★ (1067)  
4-star hotel

Travelodge  
Glasgow Central  
3.8 ★ (760)  
2-star hotel

Glasgow Film Theatre

Tesco Express

Primark  
Clothing Shop

Waterstones  
Book Shop

Forbidden Planet  
Comic book shop

Boots  
Beauty supply store

McDonald's  
Fast food • £

The Howlin' Wolf: Bar,  
Kitchen, Juke Joint

Munro Haven  
Apartments - Dundasvale

St. Andrew's First Aid

The National  
Piping Centre  
Tracing & preserving bagpipin history

Global Tint Glasgow

Kelp  
Seafood

Cambridge St Car Park

The G barbers

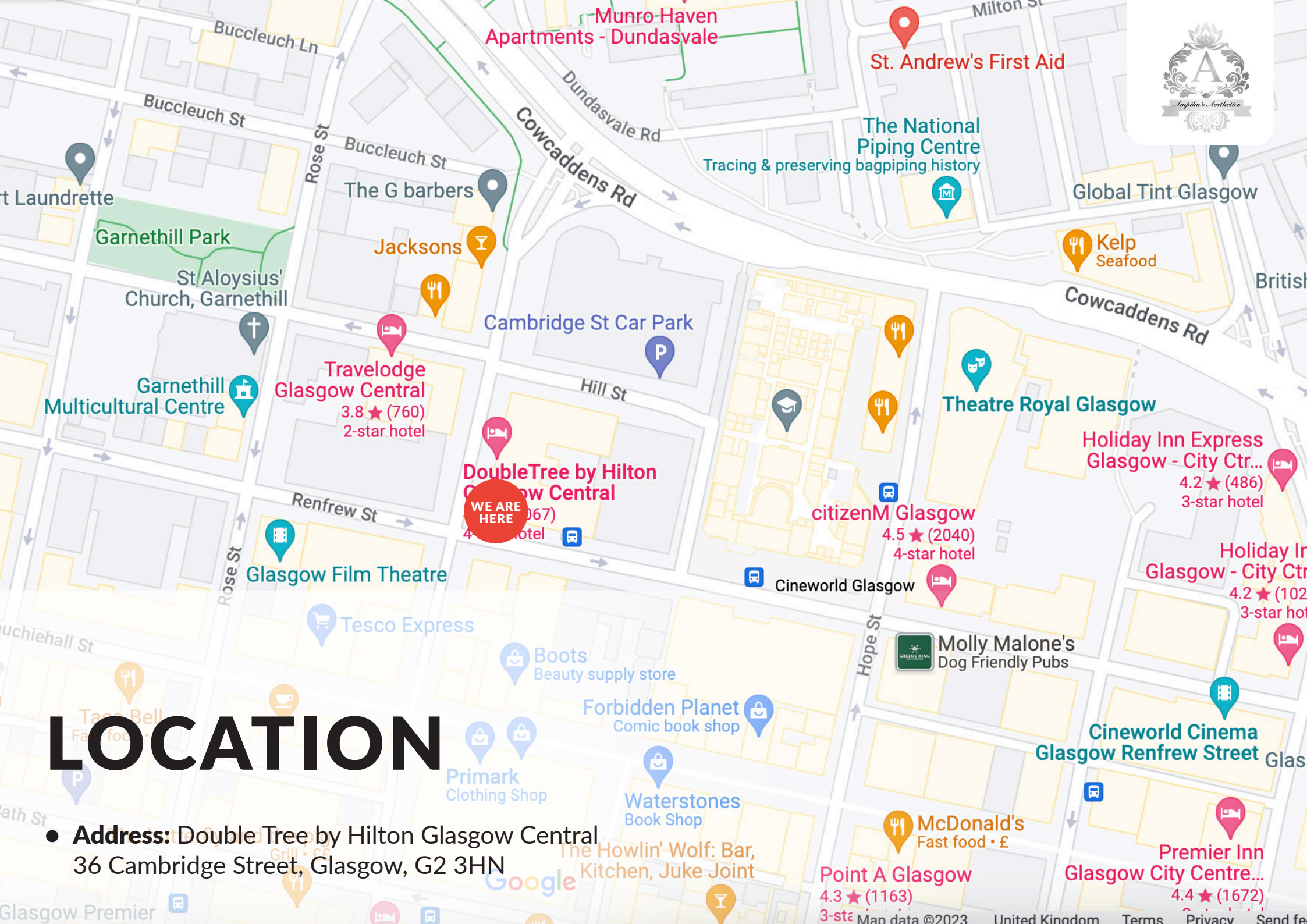
Jacksons

Garnethill Park

St Aloysius'  
Church, Garnethill

Garnethill  
Multicultural Centre

Laundrette



# TRANSPORT

- **By bus/train:** You can get to DoubleTree by Hilton Glasgow Central by bus and train. The nearest bus stop is Buchanan Bus Station. The bus stop is 0.4 miles / 0.6 km from DoubleTree by Hilton Glasgow Central. The nearest train station is Glasgow Queen Street and Glasgow Central Station. The train station is 0.5 miles / 0.8 km from DoubleTree by Hilton Glasgow Central. Glasgow Queen Street Station is 0.5 miles walking distance to the hotel. Glasgow Central Station is 0.6 miles walking distance to the hotel. If travelling from UK bus station, Buchanan Bus Station will be your main stop for Glasgow. See <http://www.spt.co.uk/bus/bus-stations/buchanan-bus-station/> for accessibility. We have bus stops located on Renfrew Street (at the side of the hotel) that can connect you to local bus routes.
- **Parking:** There are 7 accessible parking spaces. Parking is not free. From the car park to the entrance, there is a lift. The route is 1480mm wide, or more. Our car park is located underneath the hotel, it has two floors; Lower Ground (LG) and Basement (B). Its is barrier entry, when you arrive you take a ticket and park. It has space for 200 vehicles over the two floors. The price for parking is: Residents - £9.00 for overnight stay, at check-out please have your ticket ready to be validated at Reception. Conference delegates - £7.50 for max 10 hours. Please validate your ticket at Reception. Standard prices - Mon to Sat £2.30 p/h and all day Sunday £3.50 There is a drop-off point at the main entrance. The drop-off point does not have a dropped kerb.



# ACCOMMODATION



- **Double Tree by Hilton Glasgow Central**  
36 Cambridge Street, Glasgow, G2 3HN  
*Travel time: Ampika's Aesthetics Training School Location*
- **Grasshoppers Hotel**  
87 Union Street, Glasgow G1 3TA  
*Travel time: 11 minute walk to Ampika's Aesthetics*
- **Yotel Glasgow**  
Westergate, 260 Argyle Street, Glasgow, G2 8QW  
*Travel time: 13 minute walk to Ampika's Aesthetics*
- **Motel One Glasgow**  
78-82 Oswald Street, Glasgow, G1 4PL  
*Travel time: 13 minute walk to Ampika's Aesthetics*
- **Radisson Blu Hotel**  
301 Argyle Street, Glasgow, G2 8DL  
*Travel time: 14 minute walk to Ampika's Aesthetics*
- **Jurys In Glasgow**  
80 Jamaica Street, Glasgow, G1 4QG  
*Travel time: 15 minute walk to Ampika's Aesthetics*





# DRESS CODE


Appropriate attire is needed throughout the duration of the course as this is a clinical environment.

**You will be expected to:**

- Wear flat, sensible, closed-toe shoes
- Wear tunic or salon wear
- Wear leggings/pants
- Have your hair tied back
- Provide your own protective face mask or visor

Failure to do so will put the clients and yourself at risk.





If you have any further questions, please contact  
us via email at [ampikasaesthetics@gmail.com](mailto:ampikasaesthetics@gmail.com)  
or call us on 0333 996 2690

*Ampika Pickston*